

ALX-9010 Series

Dock Door Portal Appliance for ALR-9800 Enterprise RFID Reader

High performance, Gen 2 RFID reader housed in accessible, rugged, low-profile frame

The ALX-9010 series of portal appliances provides a complete, easy-to-install, dock-door solution in a durable, serviceable package. Housing the industry-leading ALR-9800 Gen 2 RFID reader and up to four high-gain antennas, the ALX-9010 family ensures high read rates and effective RFID portal implementations.

Rugged Construction

A rugged, unibody, steel chassis encloses RFID electronics and accessories. An integrated, $\frac{3}{16}$ -inch steel kickplate resists glancing blows from equipment and personnel. High-impact, RF-transparent industrial plastic covers ensure unimpeded transmission of RF signals, while presenting a sleek, professional appearance. Reader status lights are viewable through a clear plastic window. The safety-yellow chassis ensures visibility in high-traffic environments.

Easy to Install and Service

The appliance houses readers and antennas, eliminating the need to route coax cable outside the cabinet. Sturdy mounting hardware for optional light stacks, presence detectors and wireless LAN provides flexibility in implementation. An integrated horn provides an programmable, audible alarm.

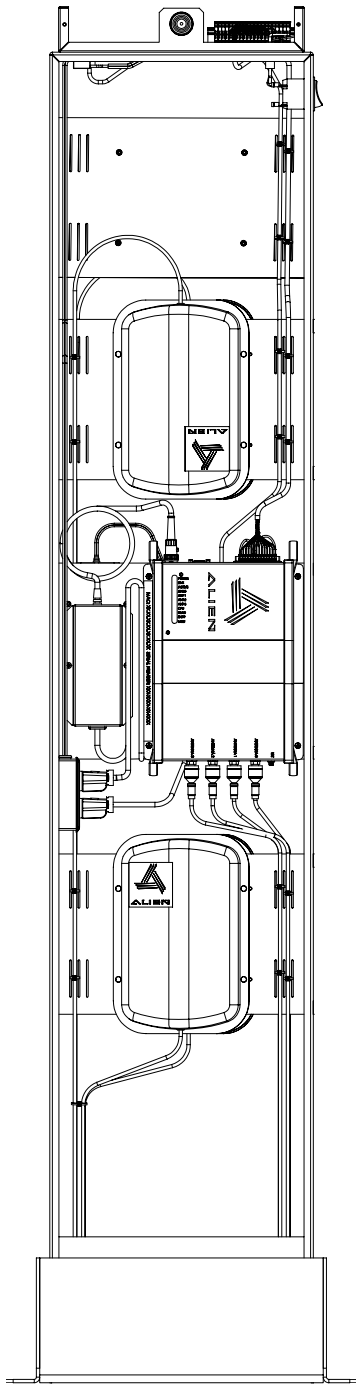
Installation is fast and simple; the unit does not need to be opened at installation. Complete access to AC power, LAN and accessory connections is available through a removable plate on the top of the unit. Four floor-mounted bolts in the steel baseplate secure the unit to the floor. Covers can be easily removed if desired, providing complete, unobstructed access to the interior for service.

ALR-9800 Enterprise RFID Reader

The ALR-9800 reader provides exceptional Gen 2 performance in an enterprise-ready package. Designed for scalability, the ALR-9800 is manageable, configurable and reliable. A flexible architecture featuring the Intel XScale processor ensures investment protection. The reader is compatible with most RFID-enabled software suites. The reader is EPC certified for Dense Reader Mode to ensure high read rates in demanding environments.

Complete Dock Door Solution

- Rugged and durable
- Easy installation and service: access power, LAN and accessories via top panel
- High performance, EPC Gen 2 Dense Reader Mode certified
- Low profile single-sided, double-sided and wall-mount versions
- Included horn. Optional light stack, electric eye and wireless LAN
- Safety and emissions certified



ALR-9814 Dual Sided Portal Appliance with covers removed

Training and Support

A detailed installation manual is included with the appliance. For software integration, a complete software developer's kit is available for the ALR-9800, as well as a variety of RFID training courses in the highly respected Alien Academy. Solution services and complete warranty support are available through the RFID Solutions Center in Dayton, OH.

Optional Configurations Offer Flexibility

The ALX-9010 series is available in five base configurations that include reader, antennas and internal power supply. AC power access, LAN connector and GPI/O connections are included. An audible horn is included. Options include light stack, electric eye presence detector, and 802.11 b/g wireless LAN. Circularly polarized antennas are standard.

ALX-9010	Chassis & covers	AC, LAN and GPIO cable harnesses, but without reader, antennas or accessories
ALR-9812	Single-sided	Single-height, with reader and circular antennas
ALR-9813	Wall-mount	Single-height, with reader and circular antennas
ALR-9814	Double-sided	Single-height, with reader and circular antennas
ALR-9822	Single-sided	Double-height, with reader and circular antennas

Preliminary Specifications

Supported readers	ALR-9800
Temperature	Operation.: -25 to +50 C; Storage: -40 to +70 C
RF Output	902-928 MHz, 4 Watt EIRP
LAN	Ethernet, Internet Protocol, optional 802.11 b/g
Construction	119 mil steel chassis; 187 mil steel kickplate, 250 mil ABS covers
Dust and Moisture	IP53
Power	110-125 AC, 2A, 60 Hz
Safety	UL 69050, CSA 22.2/60950; TUV NRTL certified
Emissions	FCC 47 CFR Part 15, Canada RS210 (ALR-9800)
Dimensions (ALR-9814)	Chassis: 5.5" x 15" x 77"; Baseplate: 6.5" x 22"
Recommended pallet height	Single height: 80 inches; double height: 96 inches

